



## Product features:

- Metal construction throughout
- Custom designed for lower range pressures
- Single lever control for effortless single handed control
- Supplied complete with flexible tail pipes for fast simple fitting
- Tall spout exit height to suit free standing basins

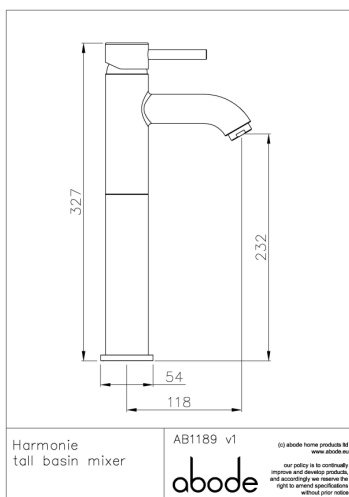
## Packaged properties:

Box length (mm): 395      Box depth(mm): 95  
Box width(mm): 165      Boxed weight (Kg): 2.3

Includes pop up waste?: No

Additional comments:

## Product dimensions:

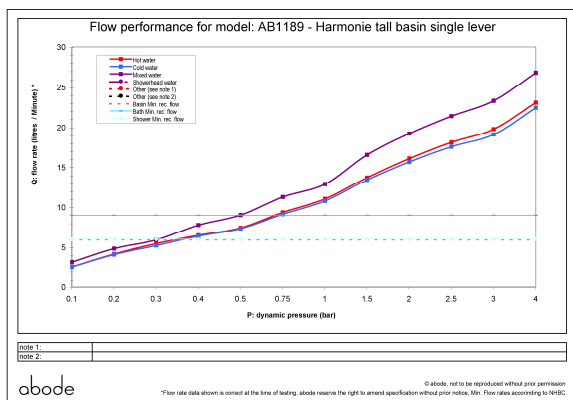


- Product mounted where: Surface
- Recommended hole size:
- Overall Height / projection: 327 mm
- Exit reach: 118 mm
- Exit height: 232 mm
- Base size: 54 mm

• Inlet centre distance(s):

- Min. fitting depth required: 80 mm
- Max. surface depth:

## Product flow characteristics:



- Min / Max water pressure (bar): 0.30\* / 5.00
- Part G max. mixed flow rate at 3 bar (l/m): 23.3
- Inlet connection type / length: Flexible / 520 mm
- Inlet (plumbing connection) / outlet size: 1/2" F / m10
- Product flow characteristics: Single flow
- Non return valve(s) supplied or position:
- Aerator type: White flow straightener
- Control valve type: Single lever (35mm)
- Includes output diverter?: No
- Inlet meshed particle filters included:
- Shower hose type / length:

## Warranty Summary (full details available on request):

- Materials and workmanship defects warranted for 5 years
- Valves and working parts warranted for 5 years
- Surface warranty defects warranted for 1 year
- O-rings, hoses & gaskets warranted for 1 year

## Care instructions:

- Clean the mixers and showers regularly as required, using soap, do not use any other cleaners.
- Regular cleaning will prevent the build up of lime scale and dirt
- After cleaning rinse thoroughly with clean water to remove any cleaner residue
- Residues of liquid soaps, shampoos and shower foams can also cause damage, so rinse with clean water after using, avoid contact with any abrasives