



5 MODE CHROME SHOWER HEAD

Spray options



Inner & Outer Rain



Outer Rain



Inner Jet & Outer Rain



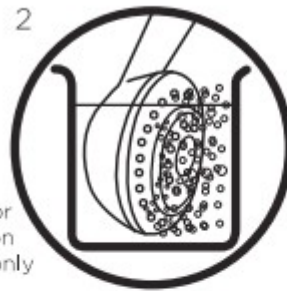
Pulse



Mist

Cleaning instructions

This shower head should be cleaned periodically to remove limescale or debris, which may reduce the performance of the shower. The frequency of cleaning will vary according to the local water quality.



Images for illustration purposes only

1. To break away scale on a daily basis, rub your thumb over the surface whilst the shower is running.
2. If scale deposits are stubborn, soak the shower head in a proprietary limescale remover and rinse thoroughly before use.

Warning

Do not use the shower head if blocked or damaged. Avoid the risk of scalding always check the water temperature before using the shower.