

## Ecostat

Shower thermostat universal for exposed installation

Finish: **Chrome** Article Number: **13122000**



### Description

#### product features

- 1 function
- EcoStop button limits the water consumption to 10 l/min
- thermostat cartridge, ceramic valve 180°
- maximum flow rate at 3 bar: 17 l/min
- min. operating pressure: 1 bar
- max. operating pressure: 10 bar
- Safety stop at 40 °C
- temperature limitation adjustable
- non-return valve
- with silencer
- centre distance: 150 ± 12 mm
- connection dimension: DN15
- connection type: s-shaped connections, G 1/2
- dirt filter included

### Technology



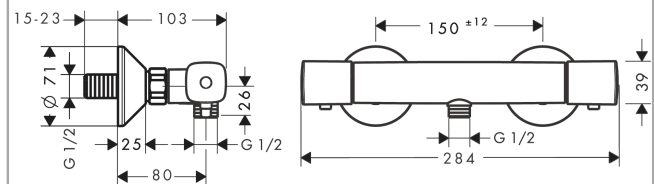
### Certificates / Sustainability



### Product image



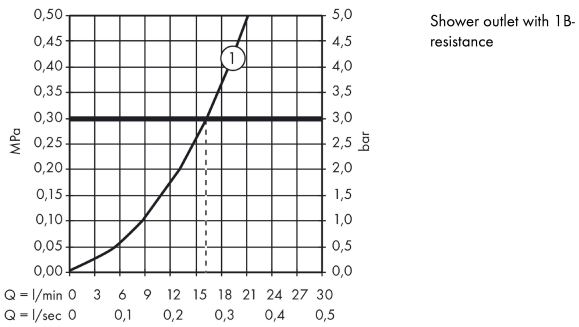
### Scale drawing



**Ecostat**  
**Shower thermostat universal for exposed installation**  
 Finish: **Chrome** Article Number: **13122000**



**Flowchart**

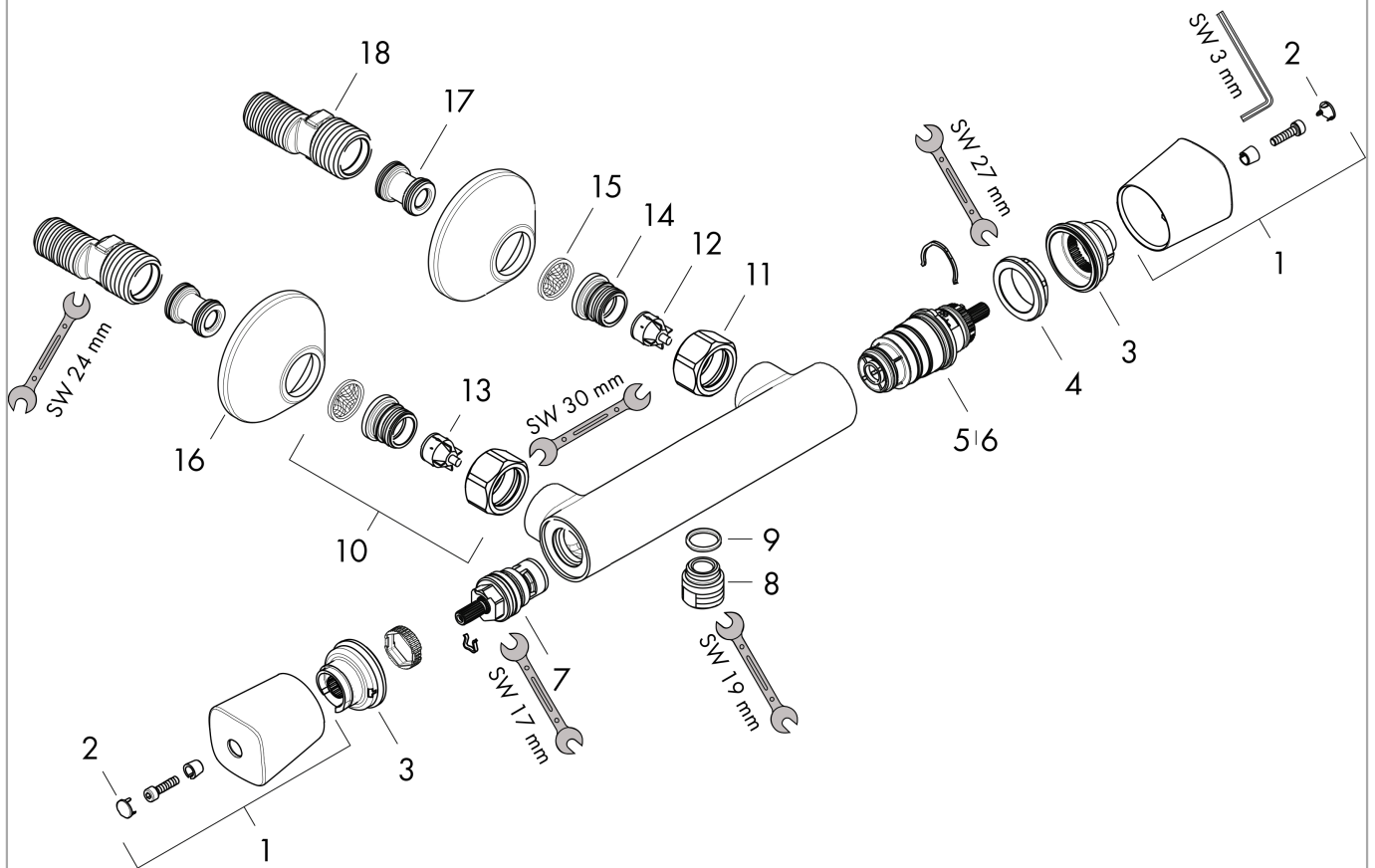


**EcoStat**  
**Shower thermostat universal for exposed installation**  
 Finish: **Chrome** Article Number: **13122000**



**Exploded Drawing**

Year of production: >01/14



## Ecostat

### Shower thermostat universal for exposed installation

Finish: **Chrome** Article Number: **13122000**



#### Spare part list

Year of production: >01/14

Pos.	Description	Article Number	PC	PU
1	handle	95780000	9	1
2	cover cap	95433000	2	1
3	safety set for temperature control	98916000	4	1
4	nut	98913000	6	1
5	thermostat cartridge	98282000	14	1
6	cartridge for exchanged connections	92373000	18	1
7	shut off unit	94149000	8	1
8	connecting thread	95392000	6	1
9	O-ring 14x2	98129000	1	1
10	set of unions	94285000	99	1
11	set of nuts	96157000	8	1
12	non return valve	96737000	8	1
13	non return valve (pressure-resistant up to 2 MPa)	93136000	8	1
14	O-ring 17x1,5	98137000	1	1
15	filter packing	96922000	3	1
16	escutcheon Ø 70 mm	94135000	4	1
17	noise reduction	96429000	2	1
18	set of S-unions (±12 mm)	94140000	10	1
a	set of S-unions (±32 mm)	98592000	9	1
b	pushbutton	92848000	2	1