

**Product Description:** SOLDER RING RED COUPLER

**Product Specification**

**Material:** Copper&Tin

**Product Code & Size:**

110260	P/R SOLD RING P1R 15X10MM RED COUPLER
111996	P/R SOLD RING P1R 22X15MM RED COUPLER
110265	P/R SOLD RING P1R 28X15MM RED COUPLER
500135	P/R SOLD RING P1R 28X22MM RED COUPLER

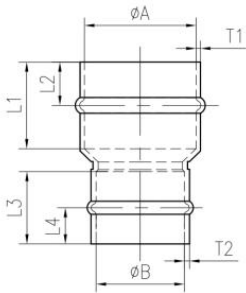


**Technical Information:**

Compliant to BS EN 1254-1

WRAS approved (Suitable for Drinking Water Installation)

Kitemark approved (Suitable for Gas Use)



SIZE	A	L1 (min)	L2 (min)	T1 (min)	B	L3 (min)	L4 (min)	T2 (min)
15*10	15.06 <sub>0</sub> <sup>+0.09</sup>	14.0	6.5	0.7	10.06 <sub>0</sub> <sup>+0.09</sup>	10.3	5.5	0.6
22*15	22.07 <sub>0</sub> <sup>+0.11</sup>	19.5	10.0	0.9	15.06 <sub>0</sub> <sup>+0.09</sup>	14.0	6.5	0.7
28*15	28.07 <sub>0</sub> <sup>+0.11</sup>	22.5	11.0	0.9	15.06 <sub>0</sub> <sup>+0.09</sup>	14.0	6.5	0.7
28*22	28.07 <sub>0</sub> <sup>+0.11</sup>	22.5	11.0	0.9	22.07 <sub>0</sub> <sup>+0.11</sup>	19.5	10.0	0.9

**Additional Information**

For Gas:

MOP 3

max 70°C

**Guarantee Period:**

25 Years against Manufacturing Defects

The information contained within this specification sheet is believed to be correct and complete at the time of creation. All photographs/drawings are as a guide only and do not necessarily represent the products available. Travis Perkins PLC reserves the right to change product details and price without prior notice. E&OE. [04/2013]