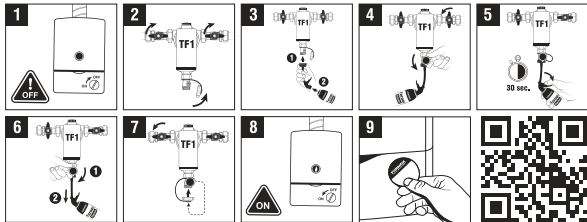


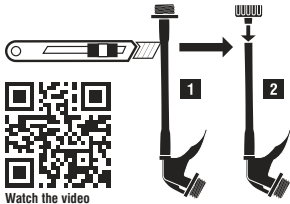
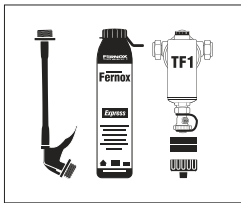
How to dose Fernox Express via a Fernox TF1 Filter



Watch the video

1. Turn off the boiler.
2. Remove the drain valve cap and close inlet/outlet valves.
3. Attach the TF1 Filter Adapter and screw onto the drain valve.
4. Open the drain valve and inlet valve.
5. Squeeze the Express trigger for 30 sec.
6. Close the drain valve and unscrew the Adapter from the TF1 Filter.
7. Open the outlet valve and replace the drain valve cap.
8. Turn on the boiler.
9. Complete and apply the re-treatment label.

How to fit the TF1 Dosing Adapter to a Fernox Express trigger for easy dosing into the system



1. Take the Fernox Express trigger and cut off the existing Adapter where it fits into the soft, flexible tubing.
2. Take the TF1 Adapter supplied with the Fernox Filter and insert into the flexible tube of the Express trigger. Push the Adapter into the tube for a snug fit.
3. Attach the assembled Express trigger to the TF1 Filter and follow the instructions overleaf to complete the dosing process.