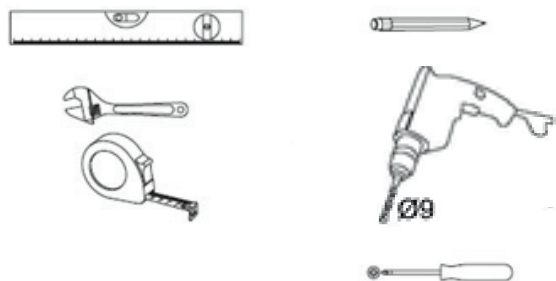


List of Parts Supplied- Horizontal Floor Fixing WC



Tools Required (Not Supplied)



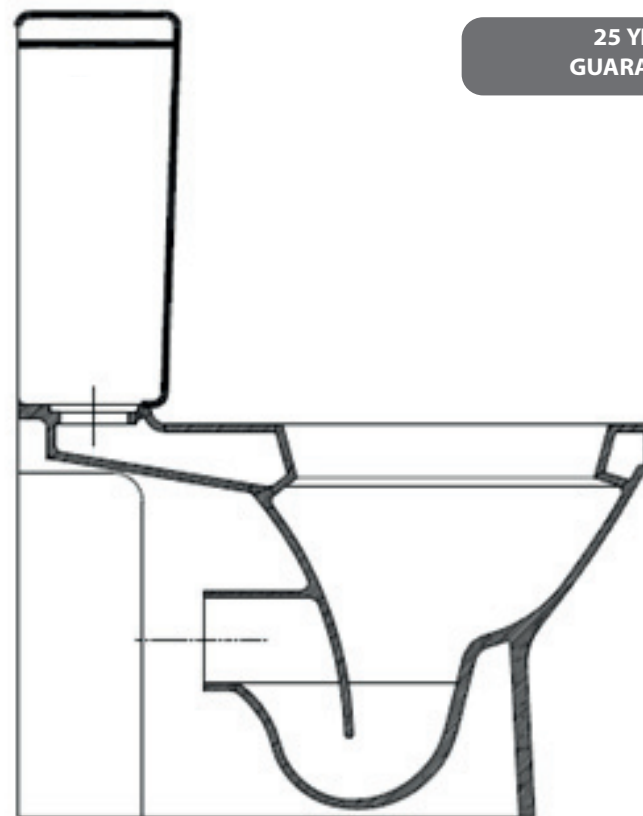
Safety Warning

- Please handle products with care.
- Installation should be carried out by a professional installer.
- Use safety goggles when drilling.
- When drilling into walls and floors check first for hidden pipes or cables.
- Please keep all small parts out of the reach of children

We have taken great care to ensure that this product reaches you in perfect condition. However should any parts be damaged or missing please contact your point of purchase. This does not affect your statutory rights. In addition if you require replacement parts your point of purchase will be happy to assist.

WC Pan Installation Guide

25 YEAR
GUARANTEE



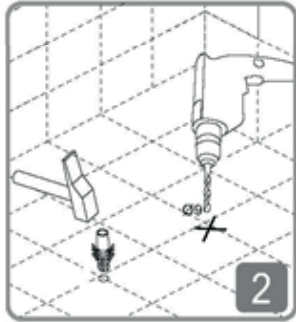
Please Note: Diagram shown is for illustration purposes only

Installation Instructions

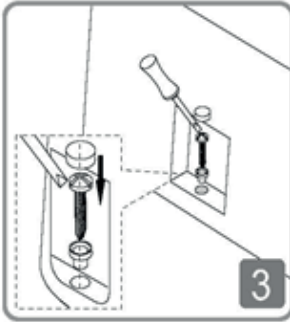
Vertical Floor Fixing



1 Place WC into position required and mark floor through fixing holes. This mark will show the drilling points.

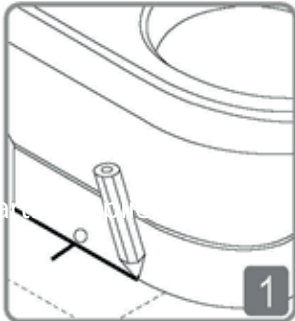


2 Drill into the floor using a 9mm drill bit. Insert wall plug into the hole.

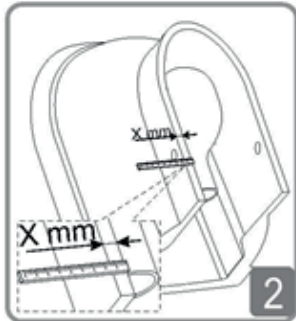


3 Place WC back into position, ensuring plumbing connection are water tight and fix WC to floor.

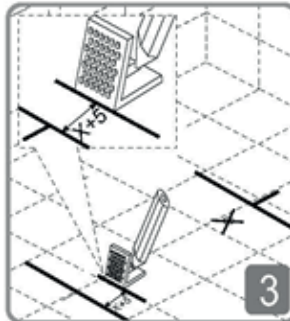
Horizontal Floor Fixing



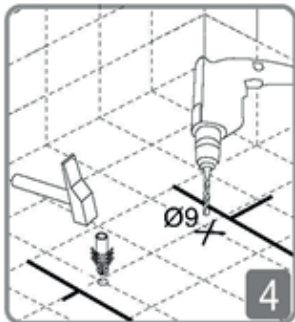
1 Place WC into position and mark the floor around the edge of the WC. Mark floor level with the fixing hole.



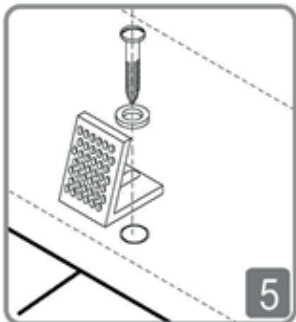
2 Remove WC and measure thickness of ceramic where the fixing hole is positioned (X).



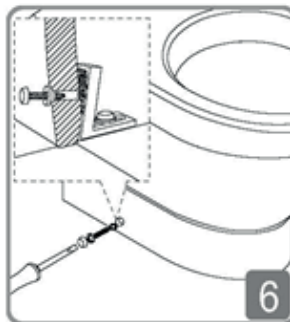
3 Position fixing bracket in the required position on the floor. Adding 5mm to measurement X. Mark floor to show drilling points.



4 Drill into the floor using a 9mm drill bit. Insert wall plug into the hole.

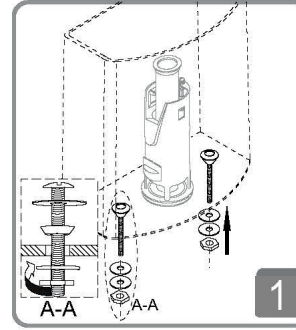


5 Install fixing bracket to floor with fixings supplied.

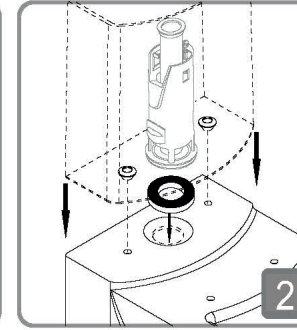


6 Fix WC to fixing bracket using screws supplied.

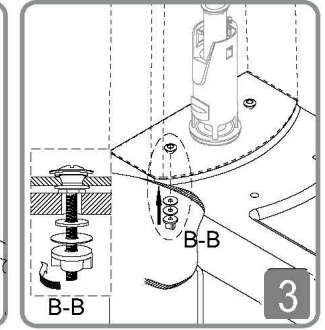
Cistern Fixing



1 Fix fitting bolts into cistern as per diagram A-A.



2 Place doughnut washer onto syphon and lower cistern into place.



3 Tighten cistern onto WC as per diagram B-B.