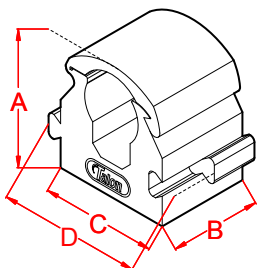


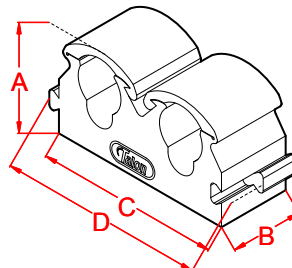
# The Talon Hinged Clip Range



Code: TS10  
10 mm  
Hinged Clip

DIM A = 21.4 mm  
DIM B = 15 mm  
DIM C = 19 mm  
DIM D = 23.5 mm

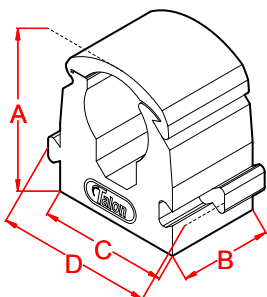
Compatible with size  
6 countersunk screw



Code: TD10  
10 mm Double Hinged  
Clip

DIM A = 21.4 mm  
DIM B = 15 mm  
DIM C = 38 mm  
DIM D = 42.5 mm

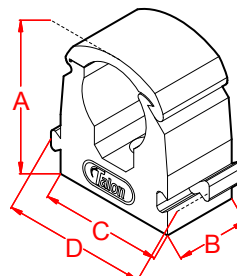
Compatible with size  
6 countersunk screw



Code: TS12  
12 mm  
Hinged Clip

DIM A = 25.3 mm  
DIM B = 15 mm  
DIM C = 21 mm  
DIM D = 25.5 mm

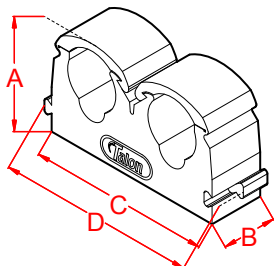
Compatible with size  
6 countersunk screw



Code: TS15  
15 mm  
Hinged Clip

DIM A = 30 mm  
DIM B = 15 mm  
DIM C = 25 mm  
DIM D = 29.5 mm

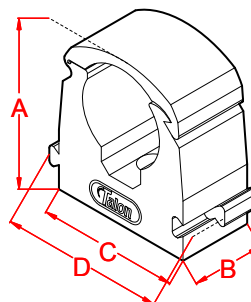
Compatible with size  
10 countersunk screw



Code: TD15  
15 mm Double Hinged  
Clip

DIM A = 30 mm  
DIM B = 15 mm  
DIM C = 50 mm  
DIM D = 54.5 mm

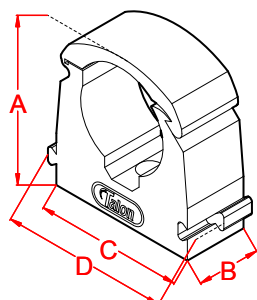
Compatible with size  
10 countersunk screw



Code: TS18  
18 mm  
Hinged Clip

DIM A = 33.5 mm  
DIM B = 15 mm  
DIM C = 29 mm  
DIM D = 33.5 mm

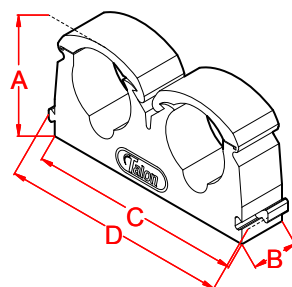
Compatible with size  
10 countersunk screw



Code: TS22  
22 mm  
Hinged Clip

DIM A = 38.2 mm  
DIM B = 15 mm  
DIM C = 35 mm  
DIM D = 39.5 mm

Compatible with size  
10 countersunk screw

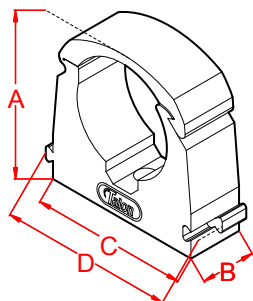


Code: TD22  
22 mm Double Hinged  
Clip

DIM A = 38.2 mm  
DIM B = 15 mm  
DIM C = 70 mm  
DIM D = 74.5 mm

Compatible with size  
10 countersunk screw

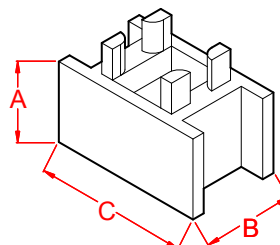
# The Talon Hinged Clip Range



Code: TS28  
28 mm  
Hinged Clip

DIM A = 44.5 mm  
DIM B = 15 mm  
DIM C = 43 mm  
DIM D = 47.5 mm

Compatible with size  
10 countersunk screw



Code: TSP1

Spacer for Talon  
Hinged Clips

DIM A = 13 mm  
DIM B = 15 mm  
DIM C = 25 mm

Use corresponding clip  
fixing

## Technical data for Talon Hinged Clips

Standard colour:  
Natural polymer (no added colouring)

### Fixing size:

Size 6 countersunk screw = TS10, TD10 & TS12  
Size 10 countersunk screw = TS15, TD15, TS18, TS22, TD22 & TS28  
No additional fixings are required for spacers (TSP1).

### Clip spacing:

The preferred spacing distance between each Talon Hinged Clip installed along a length of pipe is 500 mm.

### Load bearing applications:

Talon Hinged Clips are tested for safe use with plumbing, gas and air conditioning pipe. However, please note hinged clips are not intended for load bearing applications. Clips are designed to grip and hold specified pipe sizes only. A series of clips spaced at 500 mm intervals along a pipe installation will easily hold the natural weight of copper or plastic pipe work. For safety considerations please do not attach or hang loads to the pipe installation as this may cause clips to fail.

The load bearing capacity of a Talon Hinged clip depends greatly on the fixing surface, type of fixing and cavity plug (if required) used for the installation. Please ensure the screw size and type is correct and the length of the fixing is long enough to maintain hold of the fixing surface, clip, and perform as intended. The specified pullout resistance rating of any cavity plug and screw fixing must be sufficient to hold the clip in place to enable safe use of the hinged clip.

For light weight load bearing applications please refer to the Talon metal clip range.

### Standard quantities:

100 per bag / 1000 per box = TS10, TS12, TS15, TS18 TS22 & TSP1  
50 per bag / 500 per box = TD10, TD15, TD22 & TS28



Related products in the Talon range