



Zodia

WC Pan, Cistern & Semi Pedestal

Installation Instructions

25 YEAR GUARANTEE



Please note: Images shown are for illustration purposes only.

**521491, 187929, 187930,
521494 & 521493**

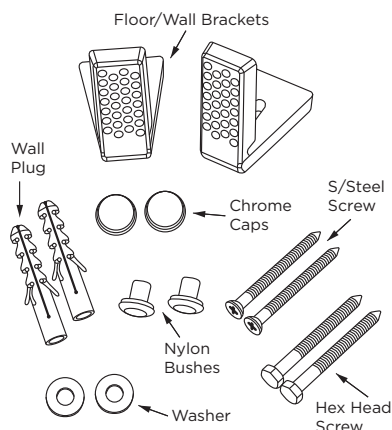
Fitting Instructions

Zodia WC Pan to Floor & Semi Pedestal

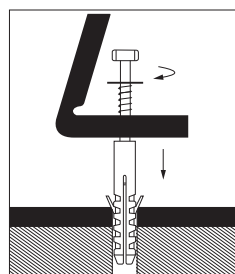
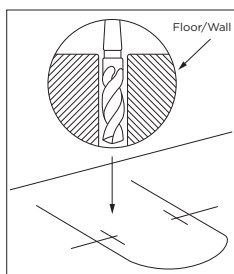
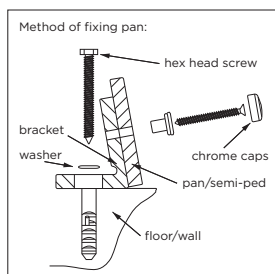


Contents

Item	Description	Qty
1	Floor/Wall Bracket	2
2	Wall Plugs S10 x 50	2
3	Hex Head Screw 6 x 60	2
4	Washer	2
5	S/Steel Screw 5 x 60	2
6	Nylon Bushes	2
7	Chrome Caps	2

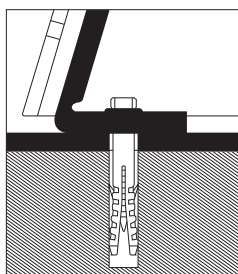


Important: the plugs included in this pack are for solid walls only. If the semi pedestal is to be mounted on a partition or stud wall, specialised fixings should be purchased separately.

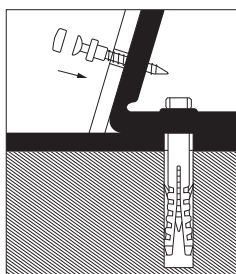


Drill dia 10mm, approx 40mm from the edge of the pan/pedestal.
Minimum drill hole depth 60mm

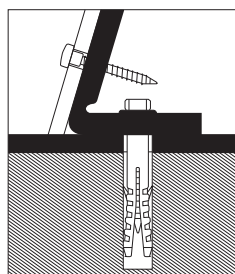
Tighten fixing bracket



Put on the new WC Pan/Pedestal



Tighten the screws



Put on the chrome caps

Caution: Take great care when drilling floors or walls to avoid wires and pipes which may run beneath.

Exercise great care when using power tools near water. The use of a residual current device (RCD) or cordless drill is recommended. Always double-check the position and your measurements before drilling holes. Protective eyewear should be used when drilling. Keep children away from the work area and remember that all small parts, plastic bags and tools should also be kept out of reach of children.

Fixing tip: A piece of insulating tape or a couple of layers of masking tape applied before marking out the fixing holes will help stop the drill from wandering on tiled surfaces.

Fitting Instructions Zodia Cistern to WC

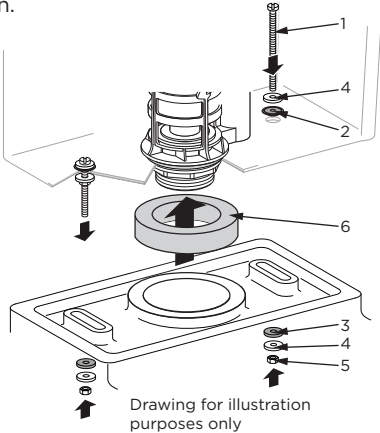


.....
PLEASE READ THESE INSTRUCTIONS PRIOR TO INSTALLATION.

These instructions must be carried out in order.

- 1) Using the checklist underneath, ensure all parts are accounted for and not damaged.
Under no circumstances should this product be installed if any of the parts are damaged or missing. If there are any installation issues please contact your local branch.
- 2) Ensure the gasket is a tight fit on the flush valve thread. Place cistern on the WC so the bolts go through the 2 small holes, add the washers as below and tighten the hex nuts.
Please use the spanner if needed. Do not overtighten.

Item	Description	Qty
1	S.Steel Bolt	2
2	Rubber Cone Washer	2
3	Rubber Washer	2
4	Steel Washer	4
5	Steel Hex Nut	2
6	EPDM Gasket	1



Installing the Push Button

1

Nut

Take off nut

2

Install push button with tank cover.

Full flush push button

Left Right

Half flush push button

3

Adjust push button clockwise or anti-clockwise to ensure that the half flush rod is aligned with the blue flush valve control and the full flush rod is aligned with the white flush valve control.

(01) Enlarge

Nut

Rod

Full flush white control (full circle)

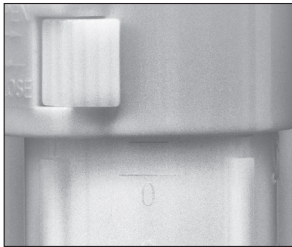
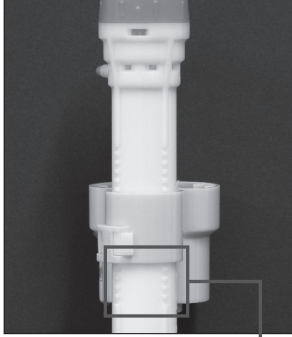
Half flush blue control (semi circle)

Loosen the fixing nut and rotate rod clockwise or anti-clockwise until the rod end makes contact with the push control then re-tighten the fixing nut (if required cut the upper ends of rods using pliers).

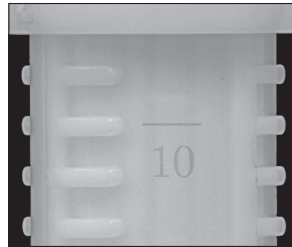
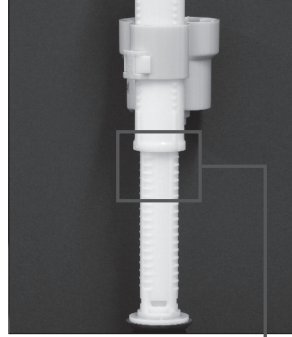
Adjusting the Flush to 4/2.6L

Please note, factory setting of the cistern inlets is 6/4L flush. The instructions below are showing how to achieve ECO flush of 4/2.6L.

INLET VALVE



Fix water cup on mark 1
(6/4L setting is mark 2)



Pull the cylinder to the 17th block
(count from bottom), 2 blocks
above mark 10
(6/4L setting is mark 11)

FLUSH VALVE



Half flush move to mark 2.5
(6/4L setting is mark 1)



Full flush move to mark 11
(to the top)
(6/4L setting is mark 2)

Customer Support:

We have taken great care to ensure that this product reaches you in perfect condition. However, should any parts be damaged or missing please contact your local branch. This does not affect your statutory rights. In addition if you require replacement parts, your local branch will be only too happy to assist.