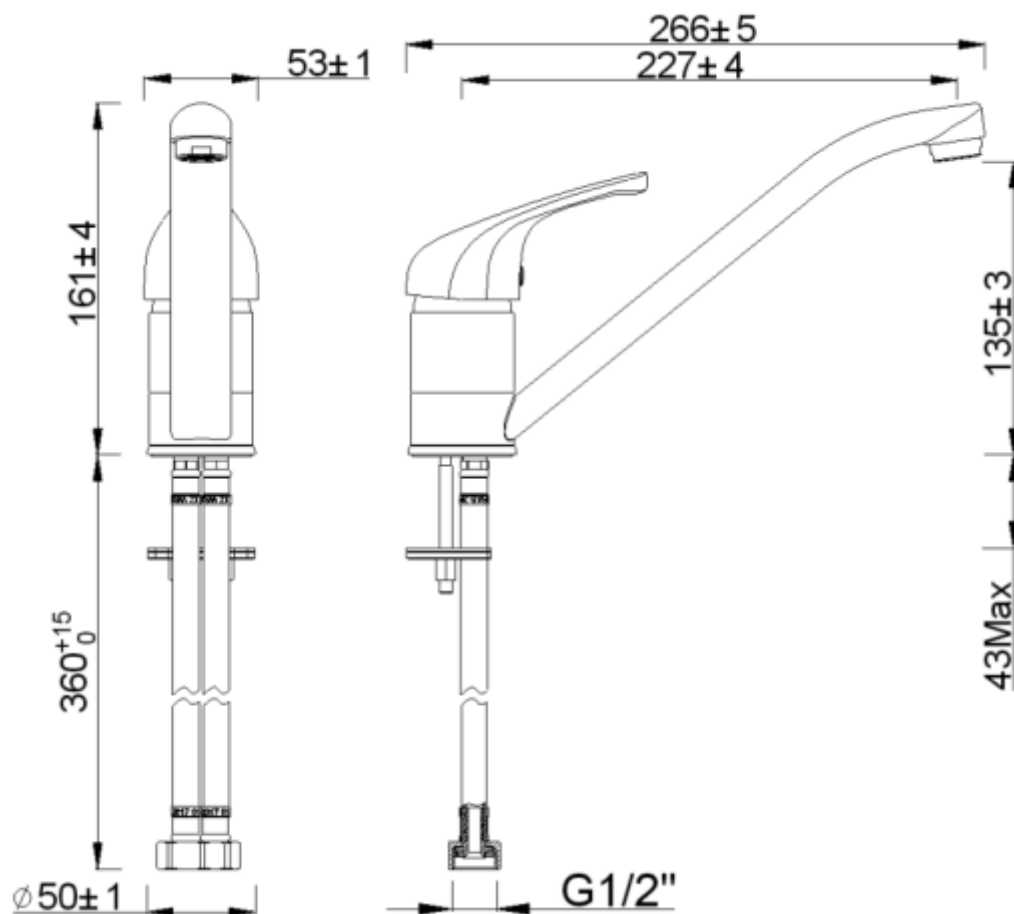


# Corte Monobloc Sink Mixer Chrome

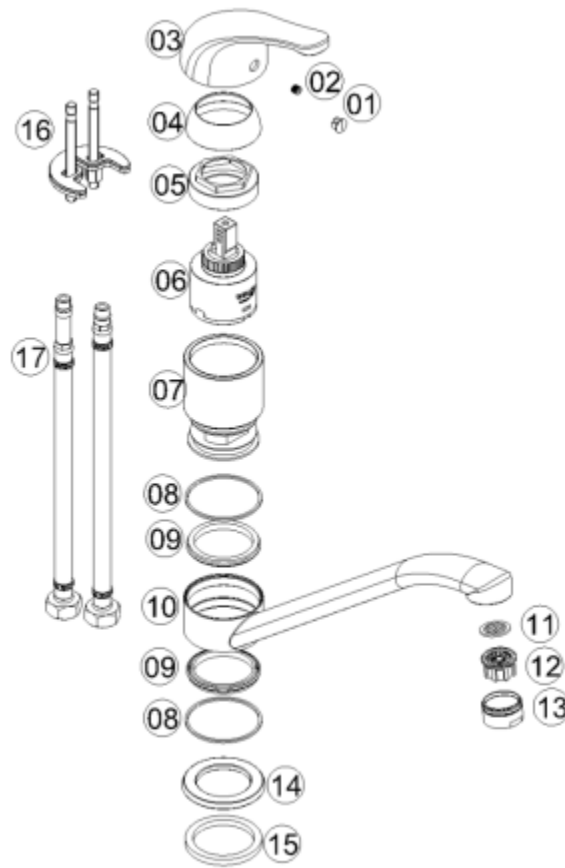
Useful Information	
Minimum operating pressure	0.2 bar
Maximum operating pressure	5 bar
Manufacturers Guarantee length	2 years



Technical Diagram



## Exploded Diagram



Item Number	Supplier Ref	Item Description	Quantity	Material	Spares Available
1	P34	Indice	1	ABS	Yes
2	SC5-4SN	Screw	1	Stainless Steel	Yes
3	177033-H	Handle	1	ZINC	Yes
4	177033-S	Valve Cover	1	ABS	Yes
5	177033-N1	Cartridge Clamp	1	Stainless Steel	Yes
6	40D-1	Cartridge Assembly	1	PPO+Ceramic Disc+Silicone Rubber	No
7	177033-01	Tap Body	1	BRASS	No
8	M4102-02-01	Washer	2	POM	No
9	N171-B	Y Type Sealing Ring	2	EPDM	No
10	177033-02	Spout	1	BRASS	No
11	A13-04X	Washer	1	EPDM+Stainless Steel	Yes
12	A13-02	Aerator	1	POM	Yes
13	A14-04	Flow straightener Shell	1	ABS	Yes
14	177033-DZ	Flange	1	BRASS	Yes
15	177033-N2	Washer	1	NBR	Yes
16	N24-I	Fixing kit	1	Steel+Brass+NBR	Yes
17	BZG10-1/2"-370-01	Braided Connectors	1	Stainless Steel+BRASS+EPDM	Yes

## Flow Rates

Pressure (bar)	Flow rate matrix		
	Hot	Cold	Mixer
	With aerator		
0.1	2.40	2.82	4.09
0.2	4.21	4.44	6.05
0.3	4.87	5.44	7.02
0.4	5.97	6.31	8.42
0.5	6.80	6.44	9.94
1.0	9.70	10.15	13.44
1.5	12.58	12.11	16.59
2.0	14.14	14.62	19.63
3.0	17.42	18.01	24.77
4.0	20.18	20.75	28.28
5.0	25.51	24.38	31.39

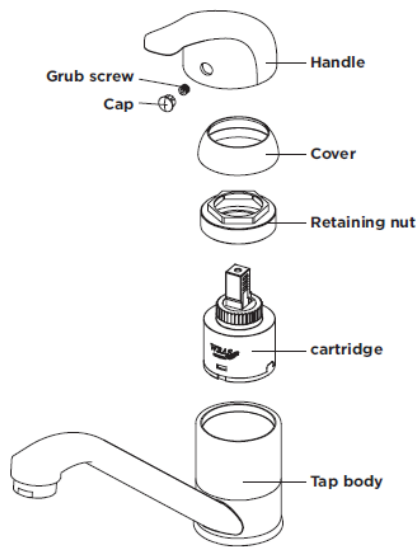
## FAQ

**What should I do if my tap is dripping/leaking?**

Cleaning the valve (if water dripping from tap)

Before carrying out any maintenance, turn off the mains water supply. If unsure contact a qualified tradesman.

1. Remove the cap, grub screw, handle and cover.
2. Remove the retaining nut using a suitable spanner, remover and clean the cartridge thoroughly under cold water to remove any build up of limescale or debris.
3. If necessary replace the cartridge.
4. Replace the cartridge into the body, tighten the retaining nut using a suitable spanner.
5. Replace the cover and handle, tighten the grub screw and re-fit cap to handle.



#### **What does the Guarantee Cover?**

The Guarantee Covering leakage, manufacturing defects and chrome plating.

The guarantee does not cover:

- Damage or defects caused by:
  - general wear and tear (including special non-chrome finishes; components such as filters, seals, 'O'rings and washers)
  - incorrect installation
  - repair using non- PPI parts
  - accidental or wilful misuse
  - corrosion and the use of inappropriate cleaning products.
  - system debris including the build up of limescale (which can be controlled through regular servicing and maintenance).
- Compensation for loss of use of the product or consequential loss of any kind.