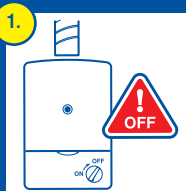
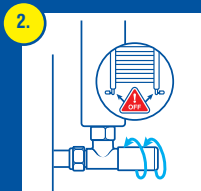


How to use Fernox Protector F1

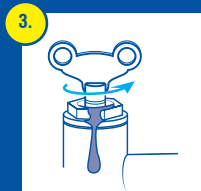
Step-by-step guide on how to dose Fernox Protector F1 into an existing towel rail. If you are installing a new towel rail - before you fill the towel rail with water go to Step 7.



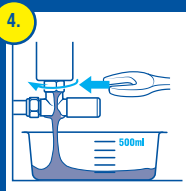
Turn off the boiler



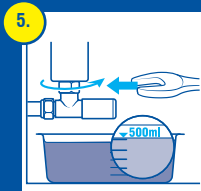
Turn off the valves at the bottom of the towel rail



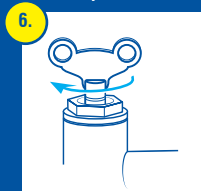
Open the bleed valve with a radiator key



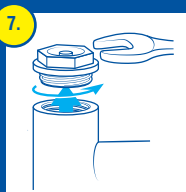
Loosen the bottom nut to allow ONLY 500 ml of water to drain from the towel rail



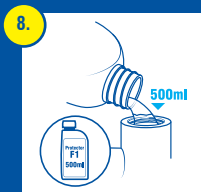
Tighten the nut back up once 500 ml of water has been drained



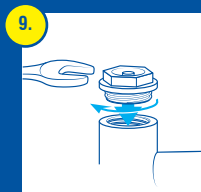
Close the bleed valve with a radiator key



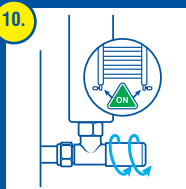
Open the top valve



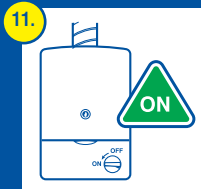
Pour in Protector F1



Close the top valve



Turn on the valves at the bottom of the towel rail



Turn on the boiler